

www.firetree.com



Conewago Place

424 Nye Road

Hummelstown, PA 17036

(717) 533-0428

(717) 533-1050 fax

conewagopl@firetree.com

Admissions

1-888-347-3873



Firetree, Ltd.

"Together Building a New Way of Life"

Firetree gives special consideration to the following high risk treatment populations:

- Pregnant injection drug users
- Pregnant women substance users
- Overdose survivors
- Injection drug users
- Veterans
- Other substance abusers



**A MEMBER OF THE
FIRETREE, LTD. GROUP**

CONEWAGO PLACE

**DRUG AND ALCOHOL
INPATIENT
TREATMENT PROGRAM**



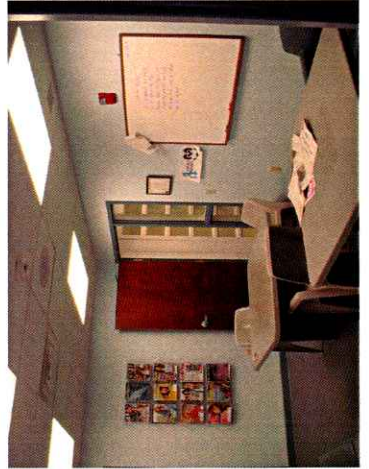
Admissions

1-888-347-3873

www.firetree.com

CONEWAGO PLACE

- Serene woodland environment on 12 acres
- Located in rural Hummelstown, Pennsylvania
- Licensed by the Pennsylvania Department of Drug & Alcohol
- American Correctional Association accredited
- Department of Drug & Alcohol licensed
- Evidence based practices including Motivational Enhancement Therapy and Cognitive Behavioral therapy
- Modified Therapeutic Community model
- 55 bed capacity
- Population served—males 18 years and older

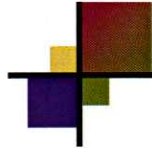


“TOGETHER BUILDING A NEW WAY OF LIFE”

Our holistic approach focuses on the physical, mental, emotional and spiritual needs of the individual. Emphasis is placed on using client strengths in conjunction with available community resources to lay the groundwork for long term recovery.

Treatment includes:

- Attending individual and group counseling sessions, community based support services.
- Working with professional staff to design a comprehensive individualized treatment plan to meet every client's needs
- Participating in Cognitive Behavioral Therapy (CBT) programs
- Attending life skills training
- Taking part in recreational programs and leisure time activities



ADMISSIONS
1-888-347-3873

FREQUENTLY ASKED QUESTIONS

What Can I bring?

- **Clothes**—a weeks worth is sufficient. Laundry facilities and laundry products are available.
- **Toiletries** --please bring unopened toiletries not containing alcohol and not in an aerosol can.
- **Cigarettes** —unopened packs only. Please do not bring loose tobacco or rolling papers or lighters
- **Money**—up to \$100.00

What NOT to bring:

- Electronic devices (laptops, tablets, cell phones, MP3 players)
- Valuables
- Printed material, t-shirts, etc. with explicit sexual content/obscene language or portraying drugs, alcohol or violence.

Visits

Family visits are welcome and encouraged. Visiting days/hours vary by facility; details will be given upon admission.

WWW.FIRETREE.COM